

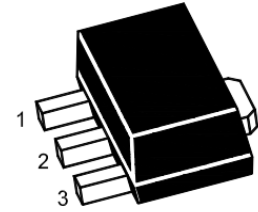


### PXT2907A TRANSISTOR (PNP)

#### FEATURES

- Switching and Linear Amplification
- High Current and Low Voltage
- Complement to PXT2222A

MARKING : P2F



1.Base 2.Collector 3.Emitter

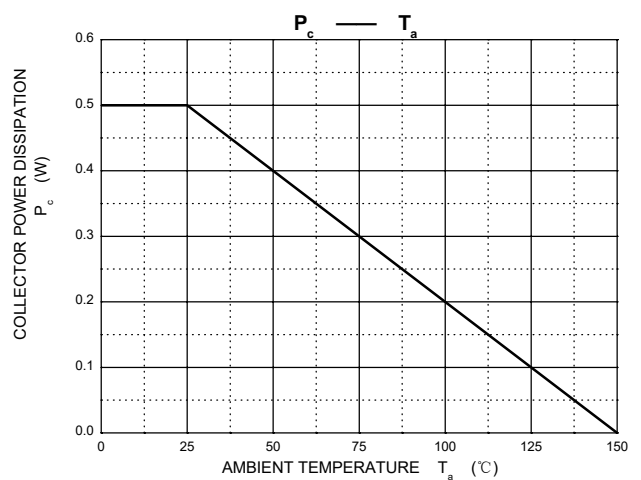
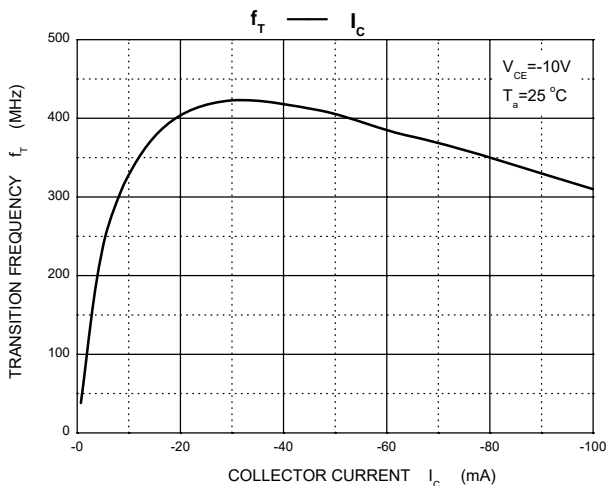
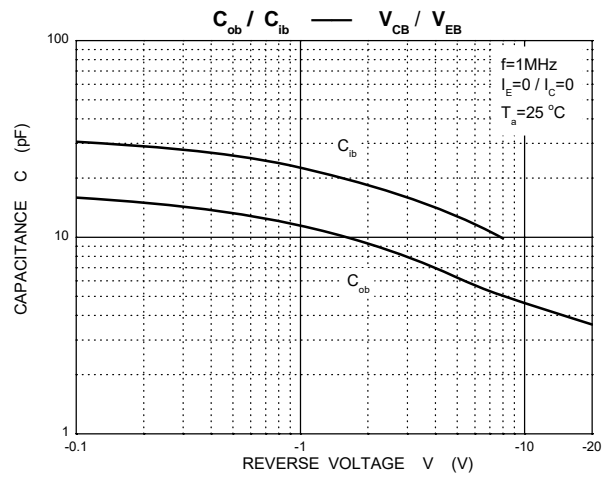
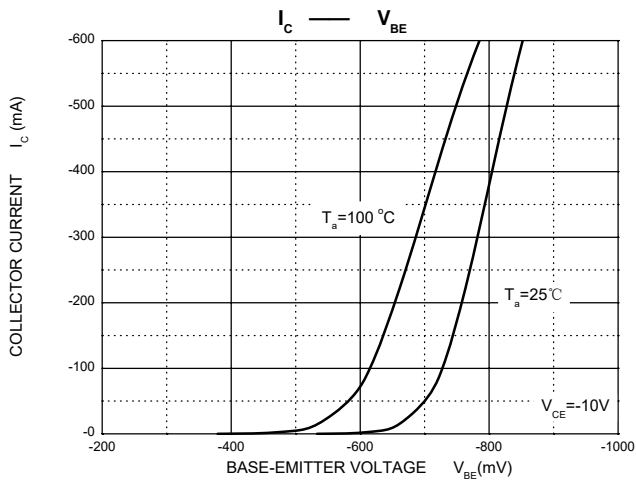
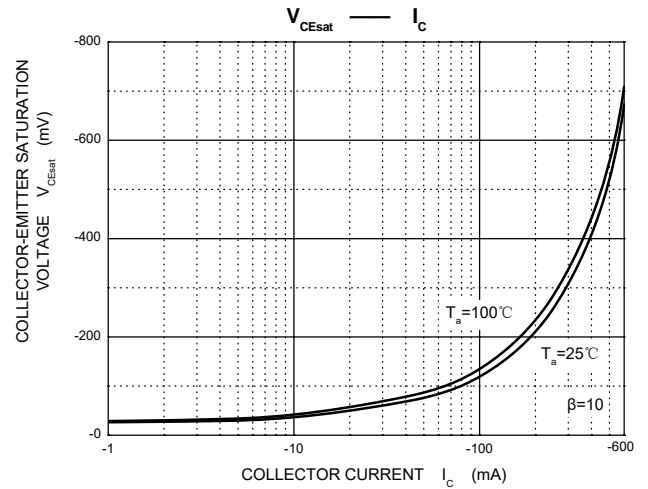
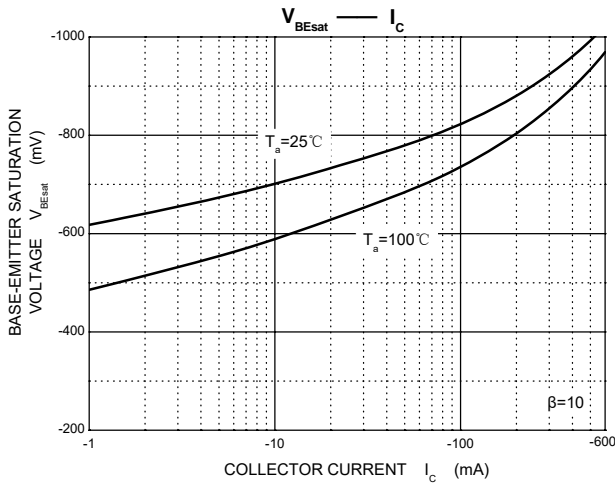
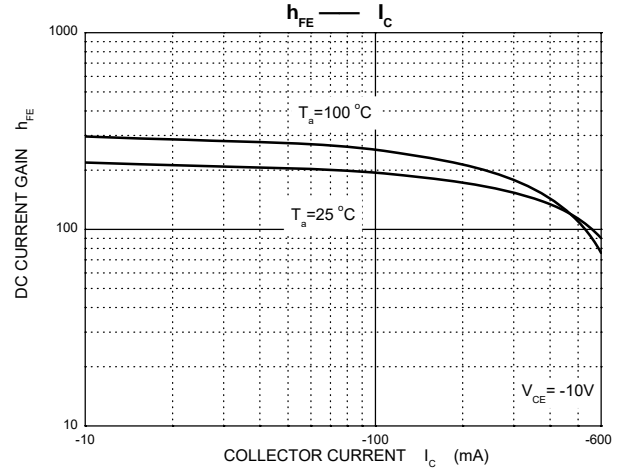
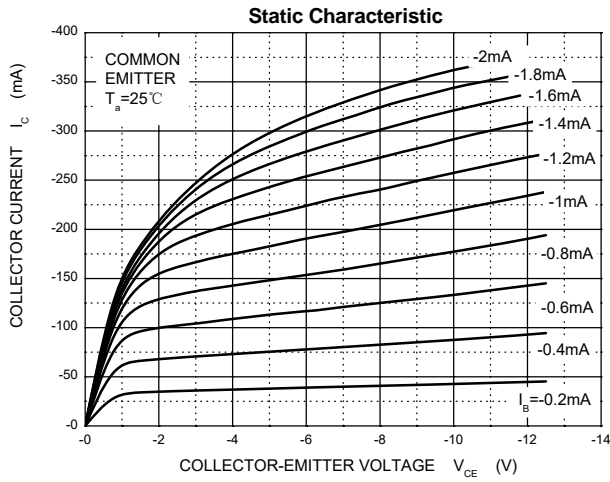
SOT-89-3L

#### MAXIMUM RATINGS (Ta=25°C unless otherwise noted)

Symbol	Parameter	Value	Unit
V <sub>CB0</sub>	Collector-Base Voltage	-60	V
V <sub>CEO</sub>	Collector-Emitter Voltage	-60	V
V <sub>EBO</sub>	Emitter-Base Voltage	-5	V
I <sub>C</sub>	Collector Current	-600	mA
P <sub>C</sub>	Collector Power Dissipation	500	mW
R <sub>θJA</sub>	Thermal Resistance From Junction To Ambient	250	°C/W
T <sub>J</sub> , T <sub>stg</sub>	Operation Junction and Storage Temperature Range	-55~+150	°C

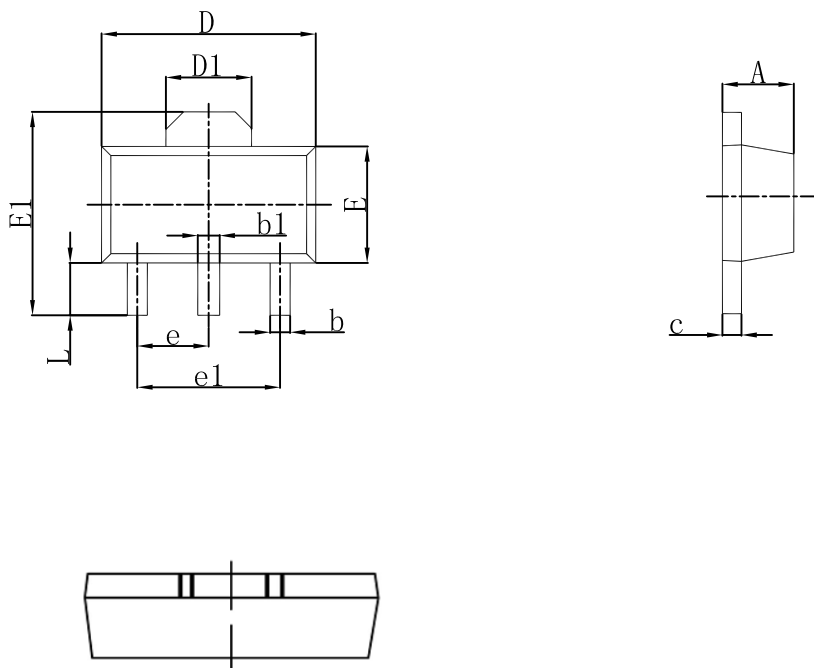
#### ELECTRICAL CHARACTERISTICS (T<sub>a</sub>=25°C unless otherwise specified)

Parameter	Symbol	Test conditions	Min	Typ	Max	Unit
Collector-base breakdown voltage	V <sub>(BR)CBO</sub>	I <sub>C</sub> =-1mA, I <sub>E</sub> =0	-60			V
Collector-emitter breakdown voltage	V <sub>(BR)CEO</sub>	I <sub>C</sub> =-10mA, I <sub>B</sub> =0	-60			V
Emitter-base breakdown voltage	V <sub>(BR)EBO</sub>	I <sub>E</sub> =-1mA, I <sub>C</sub> =0	-5			V
Collector cut-off current	I <sub>CBO</sub>	V <sub>CB</sub> =-50V, I <sub>E</sub> =0			-0.01	μA
Emitter cut-off current	I <sub>EBO</sub>	V <sub>EB</sub> =-5V, I <sub>C</sub> =0			-0.01	μA
DC current gain	h <sub>FE</sub>	V <sub>CE</sub> =-10V, I <sub>C</sub> =-0.1mA	75			
		V <sub>CE</sub> =-10V, I <sub>C</sub> =-1mA	100			
		V <sub>CE</sub> =-10V, I <sub>C</sub> =-10mA	100			
		V <sub>CE</sub> =-10V, I <sub>C</sub> =-150mA	100		300	
		V <sub>CE</sub> =-10V, I <sub>C</sub> =-500mA	50			
Collector-emitter saturation voltage	V <sub>CE(sat)</sub>	I <sub>C</sub> =-500mA, I <sub>B</sub> =-50mA			-1.6	V
		I <sub>C</sub> =-150mA, I <sub>B</sub> =-15mA			-0.4	V
Base-emitter saturation voltage	V <sub>BE(sat)</sub>	I <sub>C</sub> =-500mA, I <sub>B</sub> =-50mA			-2.6	V
		I <sub>C</sub> =-150mA, I <sub>B</sub> =-15mA			-1.3	V
Delay time	t <sub>d</sub>	V <sub>CC</sub> =-30V, I <sub>C</sub> =-150mA, I <sub>B1</sub> =- I <sub>B2</sub> =-15mA			12	ns
Rise time	t <sub>r</sub>				30	ns
Storage time	t <sub>s</sub>				300	ns
Fall time	t <sub>f</sub>				65	ns
Transition frequency	f <sub>T</sub>		V <sub>CE</sub> =-10V, I <sub>C</sub> =-20mA, f=100MHz	200		





### SOT-89-3L Outlines Dimensions



Symbol	Dimensions In Millimeters		Dimensions In Inches	
	Min	Max	Min	Max
A	1.400	1.600	0.055	0.063
b	0.320	0.520	0.013	0.020
b1	0.400	0.580	0.016	0.023
c	0.350	0.440	0.014	0.017
D	4.400	4.600	0.173	0.181
D1	1.550 REF.		0.061 REF.	
E	2.300	2.600	0.091	0.102
E1	3.940	4.250	0.155	0.167
e	1.500 TYP.		0.060 TYP.	
e1	3.000 TYP.		0.118 TYP.	
L	0.900	1.200	0.035	0.047